

**Friends
of the**

*Suffolk
Record
Office*

Registered Charity
No 288042

Newsletter of the Friends of the Suffolk Record Office

September 2008

Suffolk Record Office at the Suffolk Show

The record office attended the Suffolk Show in May with a display to celebrate the 100th anniversary of the founding of the National Farmers' Union. The panels comprised an illustrated history of the NFU, focusing on particular themes in Suffolk, such as the Tithe War and the Sugar Beet Industry. Peter Kendal, the National President of the NFU and John Collen, the Chairman of the Suffolk NFU, visited the record office stand to look at the display and had a discussion with Councillor Guy McGregor about farming in the 21st century. The panels will be on display at the Museum of East Anglian Life over the summer and at other library and record office venues.



John Collen, Chairman of the Suffolk NFU, Peter Kendal, National President of the NFU, Jeremy Pembroke, Leader of Suffolk County Council and Councillor Guy McGregor (l-r) at the Suffolk Show

Inside this issue:

Record Office News: Starters and Leavers 2

Record Office News: Outreach 2-4

'Everyclick' 4

Recently Purchased Manuscripts 5

Subscriptions 5

Shrubland Hall Photographic Collection 6-7

Contact Details 8

Courses at the Suffolk Record Office 8



Suffolk Record Office News

Starters and Leavers

Sue Munt stepped down from her permanent post at the Ipswich branch in March. Sue worked for the record office for over 15 years and we are very fortunate that she has decided to stay on as a relief member of staff. Bruce Martin has taken over the post of Research Assistant at Ipswich and we have appointed Sally Whiffing to his former post as Searchroom Assistant. Ivan Bunn and Jacqueline Dunster have recently been appointed to posts at the Lowestoft branch—they have already been working at the branch as a Sunday Assistant and relief post but we look forward to seeing more of them as permanent staff.

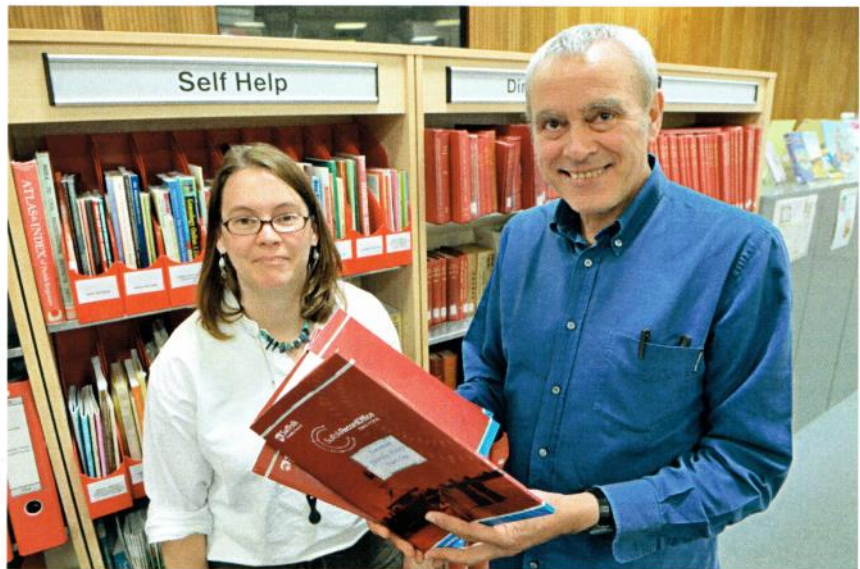
We are also very happy to announce that Jason Siddall has been appointed as Heritage Information Manager. He started work at the end of July and will be working closely with museums across the county.

Outreach

The record office has been particularly busy over the last few months with outreach events and activities. A programme of talks and “Find Out About” sessions was run over the summer and the leaflets for the September to December season will be sent out shortly.

Michael Foreman’s Visit to Lowestoft

In conjunction with the Library Service the record office has been celebrating 2008, the National Year of Reading. On 18 June an audience of 35 people including 3 youngsters, enjoyed hearing Michael Foreman talk about his childhood years in Pakefield during the war, accompanied by a screen showing of pictures from his books. Just before his talk in



Lowestoft Library’s Meeting Room, Michael Foreman had a private viewing of some of the Lowestoft Record Office’s archives, including old maps and photographs of his mother’s sweet shop in Pakefield. He was fascinated by these and was thrilled by the surprise presentation of two folders of Family History Research covering his family. He said “It’s like being given a treasure!”.



'Discover Your Past'



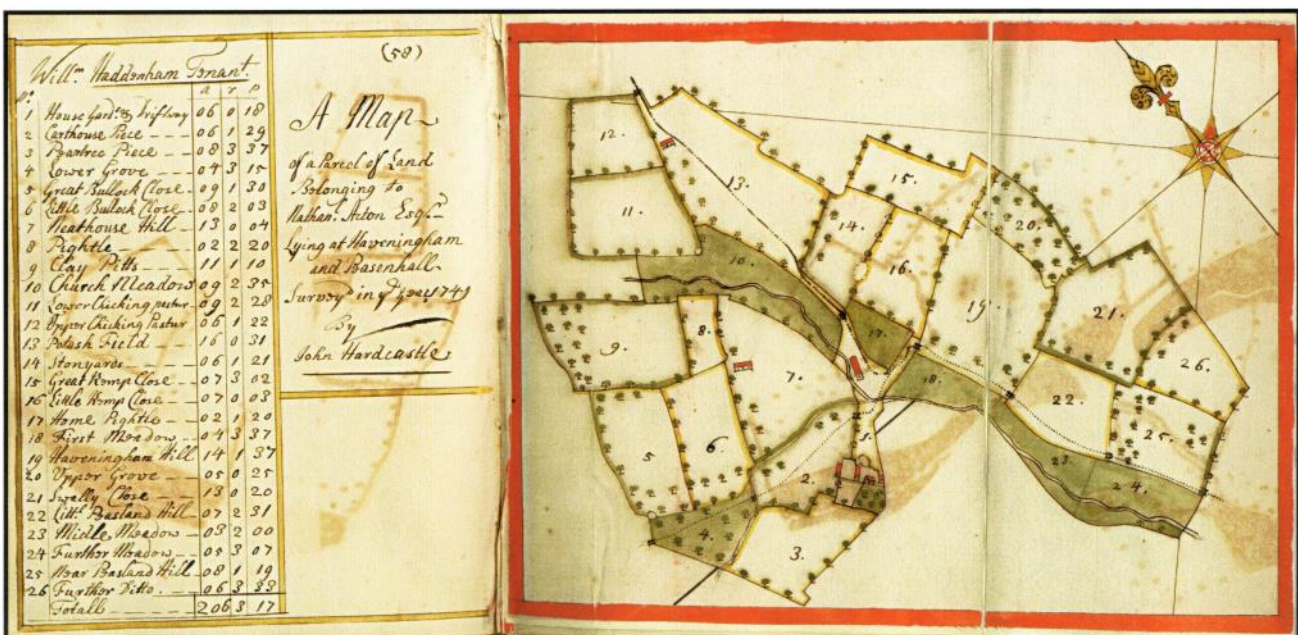
Photograph of workers building one of the houses on the estate, possibly Prince Charles Avenue, late 1940s

SRO Bury: Bury K/PF/90

The Suffolk Record Office worked closely with the St Edmundsbury Heritage Service to host a 'Discover Your Past' event on the Mildenhall Road estate in Bury on 28 March 2008. The event included a display of records relating to the estate, an exhibition from the Bury St Edmunds Past and Present Society, support from FOSRO and stalls from the SEBC Heritage Service, Partnership with Older People, Blaxhall Archive Group, Suffolk Family History Society and Suffolk Local History Council. Despite the appalling weather the event was a success and groups from the estate later visited Moyses Hall and the record office.

Heveningham Hall Fair

On Sunday 6 July 2008 the Lowestoft branch was invited to take part in the Heveningham Hall Fair. A display about the estate and the surrounding area was put together and Ruth Silburn and Brenda Gower attended. The fair was a great success with over 200 people viewing the exhibition panels and 100 people asking questions about the record office and archives in general.



Maps of estates belonging to Nathaniel Acton, 1723 -1756



Outreach Activities continued

Long Melford Local and Family History Fair

Staff from the Bury branch attended the Melford Hall Local and Family History fair on 31 May, with a display on the Steggles Family History. The Long Melford Historical Society was also there with a display concentrating on the industrial history of Melford. Over 250 people attended the event and feedback was very positive.

St Edmundsbury Historic Property Fair

The Bury staff also took part in the St Edmundsbury Historic Property Fair on 14 June at the Athenaeum. A display on the history of a property on Honey Hill, in Bury St Edmunds was taken and Sheila Reed gave a talk to 22 people on how to research the history of your property.

First Edition OS Map of Bury St Edmunds, 1886



Everyclick

In September 2007 FOSRO registered itself on the 'everyclick' website, a site where people can search the internet and raise money for their favourite charity at the same time. The Suffolk Record Office staff have all started using 'everyclick' as their search engine and are encouraging members of the public to do the same.

The total amount raised so far for the Friends currently stands at £43. The website address is <http://www.everyclick.com>

When you first use the website you will need to specify which charity you wish to support by clicking on "Find Your Favourite" and searching for Friends of the Suffolk Record Office. You can then click on "Fundraise for this charity" and sign up to support the Friends.



Recently Purchased Documents

In addition to the Shrublands photographic collection (see pages 6-7) the Friends committee have also bought a number of other items.

HD2960/13707 RIGHT REVEREND LORD ARTHUR HERVEY

The Friends bid successfully at auction for a collection of 25 letters written to Hervey. They are mostly on church matters, including local Friendly Societies, education, Norwich Church Conference and much else. The correspondents include many prominent church and state figures including George Grey (on transportation), S H Walpole, E C Hawtrey, Nathaniel Woodard, George Williams and date from 1852-1867. The collection cost £141.14 and is housed at the Bury branch.

HD2975/13747 FARM ACCOUNT BOOK

The National Archives notified the record office about this farm account book and the Friends were able to purchase it for £42. The volume is an account book for Charles Hanmer Westropp of Melford Place and covers the period from February 1842 to April 1845. The 18 pages of accounts, under the heading of customer's name, record the sale of keep for horses and ponies, oats, tares, turnips, hay, faggots of wood, loads of straw, beasts sold ('1 fat tup', 'the fat Hoggett'). The item is housed at the Bury branch.

The Friends also bid unsuccessfully for two items relating to Newmarket. The first was an account book recording the wages and expenses of apprentice jockeys and horse trainers at the stables of John Leach, Graham Place, Newmarket, dated 1898-1914. The estimate was £70-£100 but it sold for £210. The second item was an apprenticeship indenture for Thomas Gibson, who was to be apprenticed into the art of a trainer and jockey with George Peddie Thomas Dawson of Heath House, Newmarket, dated 11 October 1887. The estimate was £70-£100 but the lot realised £170.

Membership and Subscriptions

Members are reminded that subscriptions for 2008 were due on 1st January. The minimum subscription for Individual membership is £12 and £20 for Corporate membership. Please send any outstanding subscriptions to the Treasurer or Secretary —address details are on page 8.

Gift aid declarations and standing order forms are available from the Secretary or from the Friends' webpage on the Suffolk County Council website—

www.suffolk.gov.uk/LeisureAndCulture/LocalHistoryAndHeritage/SuffolkRecordOffice/Friends/



Shrubland Hall Photographic Collection

In October 2007 the Suffolk Record Office was allocated the archives of the de Saumarez family (ref HA93) through the Acceptance in Lieu Scheme, where significant collections can be accepted by the government in place of inheritance tax. The de Saumarez archive was already on deposit at the Ipswich branch and included estate records, maps, plans, family papers and naval papers.

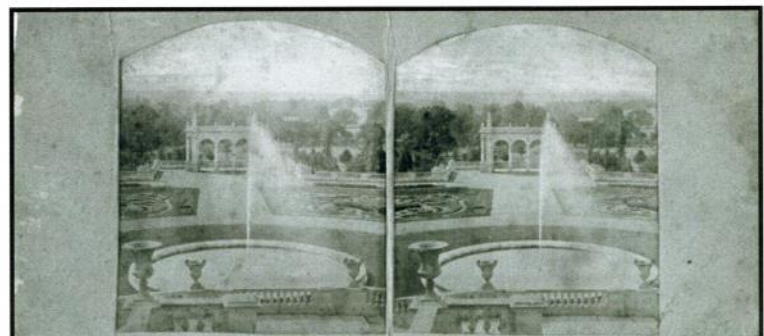
In May 2008 a wonderful photographic collection of prints, plates and albums was offered for sale by a rare book dealer for a guide price of £4,500. It was felt that the collection showing views of Shrubland Hall and its gardens would be a significant addition to the archives and the Friends were very keen to ensure that the collection was preserved and housed with the other material relating to Shrubland Hall and Park. An offer of £3,855.50 was successfully made and the collection is now housed at the Ipswich branch under the reference K839:14621

Dating from c1860, the collection charts the development and growing maturity of Italianate gardens first laid out by Charles Barry in the 1850s. It also records the photographic history of Shrubland Hall, evolving from a family home mourning the death of its owner in 1860 through to its guise as a health club in the 1960s under the ownership of the de Saumarez family.



Sir William Fowle Middleton, 2nd Bt, owner of Shrubland Hall died in 1860 and the collection contains a series of 27 large format albumen prints (prints 290 x 410mm on cards 480 x 595 mm) which were commissioned at the time of his death. The print on the left clearly shows his armorial 'morte' above the door. These large format prints illustrate the work undertaken on the house and gardens in the period 1830-1850s by the architects James Gandy-Deering, Alexander Roos, Charles Barry and others.

K839 – Stereoscopic view down the Descent towards the Panel Garden and Loggia





The collection also includes:

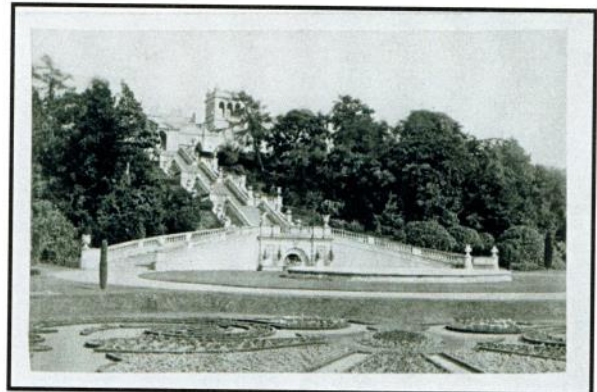
- an album of prints of the interior, exterior and grounds of Shrubland, bound in green, by the photographer, Palmer Clarke of Bury St Edmunds. This must pre date 1903 as Palmer Clarke moved to Cambridge around this date. Views from this album were used in the Sotheby's catalogue for the 2006 sale.



K839 - Interior view of the Sculpture Gallery taken from the Palmer Clarke Album, c1900

- 7 studies on white glass of the grounds, 1890s
- 2 further albums of interior and exterior studies taken in 1908
- A 'Kodak Panoramas' album of similar date.
- 2 stereo views and 3 carte de visite views
- Album of exterior and interior views (stamped G.S.) 1930s
- Album of colour interior views (stamped G.S.) 1980s
- Quantity of loose photographs, postcards, negatives, prints of art works all relating to Shrublands.

K839 - Carte de visite showing the Descent, 100 steps which lead down from the Hall to the Panel Garden



Louise Clark
Archivist, Ipswich Record Office

Selected images from the Shrubland photographic collection will be on display at the AGM, which will be held at the Ipswich branch of the Suffolk Record Office on Friday 26 September 2008. We look forward to seeing you there.

**Suffolk Record Office Contact Details**

For any queries or comments about the Friends please contact the secretary or treasurer.

The Secretary

Suffolk Record Office
77 Raingate Street
Bury St Edmunds
Suffolk
IP33 2AR

Phone: 01284 352352

Fax: 01284 352355

Email:

judith.stephenson@libher.suffolkcc.gov.uk

The Treasurer

Moatfield
Oakhill
Hoxne
Eye
Suffolk
IP21 5AL

77 Raingate Street
Bury St Edmunds
IP33 2AR
Telephone: 01284 352352
Fax: 01284 352355
Email: bury.ro@libher.suffolkcc.gov.uk

Gatacre Road
Ipswich
IP1 2LQ
Telephone: 01473 584541
Fax: 01473 584533
Email: ipswich.ro@libher.suffolkcc.gov.uk

The Library
Clapham Road
Lowestoft
NR32 1DR
Telephone: 01502 405357
Fax: 01502 405350
Email: lowestoft.ro@libher.suffolkcc.gov.uk

Website address: <http://www.suffolk.gov.uk/sro>

Courses at the Suffolk Record Office

The record office is running a number of 10 and 20 week courses this autumn, covering a wide range of topics. These include:

Ten Week Courses

17th Century Suffolk—£55	Monday 29 September	2.00pm-4.00pm	Bury
17th Century Suffolk—£55	Thursday 2 October	10.00am-12.00pm	Bury
Palaeography IV—£55	Friday 26 September	9.30am-11.30am	Bury
Palaeography I—£55	Monday 29 September	10.00am-12.00pm	Bury
Suffolk Churches—£55	Tuesday 23 September	10.00am-12.00pm	Bury

Twenty Week Courses

Medieval Latin Palaeography for Beginners		£210 (£105 per term)	Ipswich
Wednesday 8 October 2008—Wednesday 18 March 2009		10.30am-12.30pm	
Medieval Latin Palaeography Advanced		£210 (£105 per term)	Ipswich
Monday 6 October 2008—Monday 16 March 2009		10.30am-12.30pm	

For further information, details of other courses and to book, please contact the relevant branch or see the Suffolk Record Office webpages on the Suffolk County Council website:

<http://www.suffolk.gov.uk/LeisureAndCulture/LocalHistoryAndHeritage/>

SuffolkRecordOffice